

# Moose Hunts

**Bear Mountain Guide Service** provides guiding for New Hampshire Moose hunting in Wildlife Management Units A1, A2, B, C2. New Hampshire moose hunting permits are issued by lottery, successful lottery winners are advised to book their trip as soon as possible following notification.



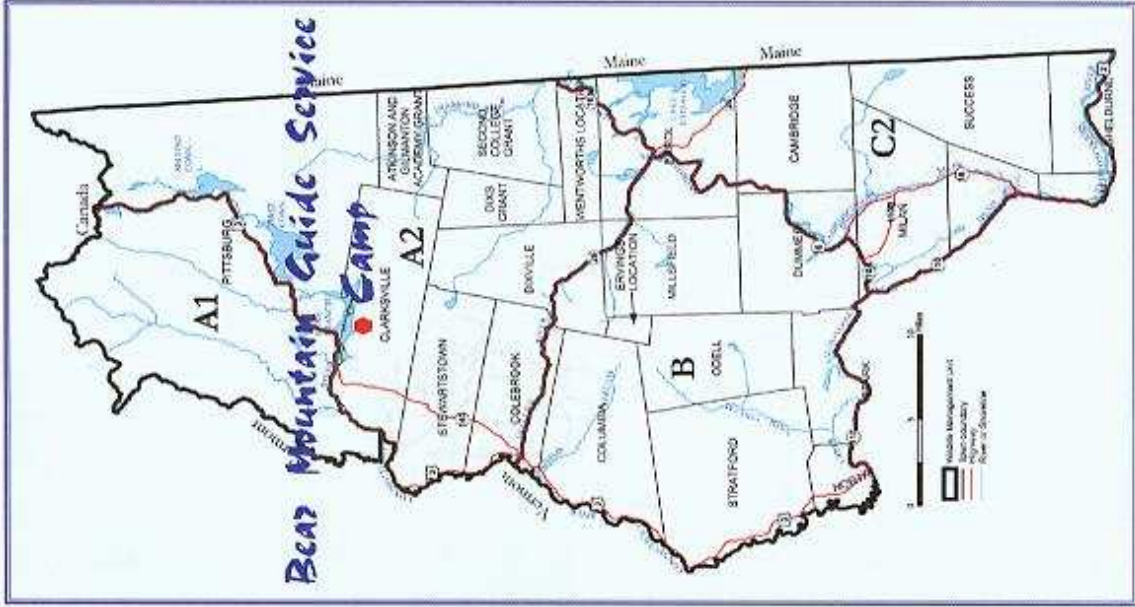
We offer two hunting packages for the permittee and sub-permittee;

### **Fully Guided ~ \$1500.00**

Which includes: Lodging, transportation during the hunt, recovery of your moose, cleaning of your moose, we can even assist in finding a butcher!

### **Semi-Guided ~ \$750.00**

Which includes: Lodging, scouting before the hunt and showing you the best areas to hunt, recovery of your moose, cleaning of your moose, we can even assist in finding a butcher!



New Hampshire is comprised of 13 Wildlife Management Units. Each with it's own degree of uniqueness and diversity of terrain and wildlife distribution.

**Bear Mountain Guide Service** prides itself on knowing the 4 WMU's that we guide in.



New Hampshire Licensed Guide

**Brian Robinson**

215 Perley Street

Manchester, New Hampshire 03104

Office (603) 627-6972

Cell (603) 540-5175

Visit us online at:

[www.bearmountainguideservice.com](http://www.bearmountainguideservice.com)

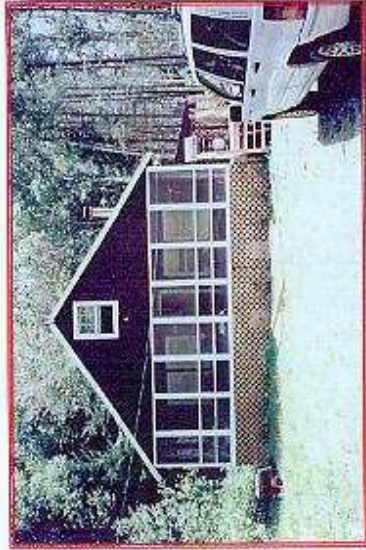
or e-mail for info:

[moosehollow5@verizon.net](mailto:moosehollow5@verizon.net)



## Camp

**Bear Mountain Guide Service** camp is located in Clarksville, New Hampshire, right in the middle of pristine moose, bear, and whitetail deer country.

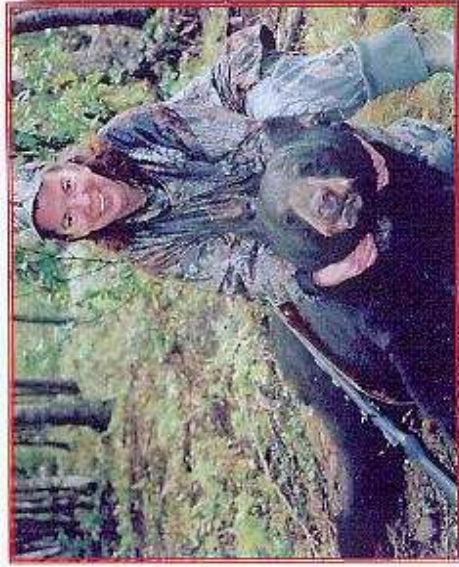


We have tried to outfit the camp to be a home-away-from-home while you are hunting with us, our camp has 3 bedrooms, bathroom/shower, full kitchen, TV, DVD -VCR, and a woodstove in the living room to keep you warm and toasty.



*Camp,  
where memories are made,  
stories told,  
and the BS flows!*

## Bear Huntins



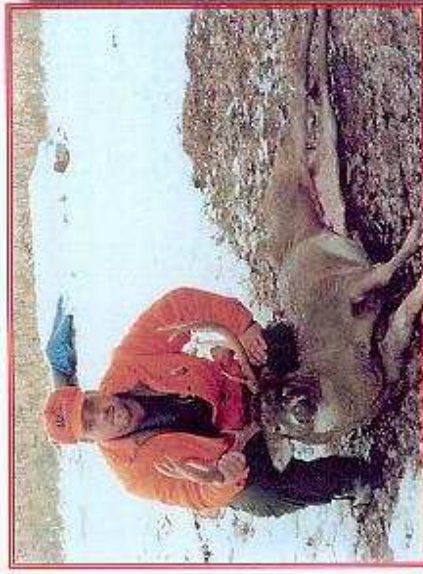
- 6 days of hunting
- active bait sites
- lodging
- treestands or ground blinds
- 10 to 40 yards
- transportation to/from sites (if needed)
- recovery of bear
- care and cleaning of bear
- skinning upon request
- Archery
- Rifle
- Shotgun
- Muzzleloader
- \$750.00

### *Special Combine Archery Deer Hunting with your Bear Hunt!*

September 15 ~ September 28

Deer hunting in morning until noon,  
take a lunch break and a short nap,  
Bear hunt over bait in the late afternoon  
until 1/2 hour after sunset.  
Add \$100.00 per day.

## Deer Huntins



### **Bear Mountain Guide Service**

deer hunts include; lodging, tree stands, recovery of your deer, and in the late season active bait sites.  
3 - 6 day hunts \$200.00 per day.